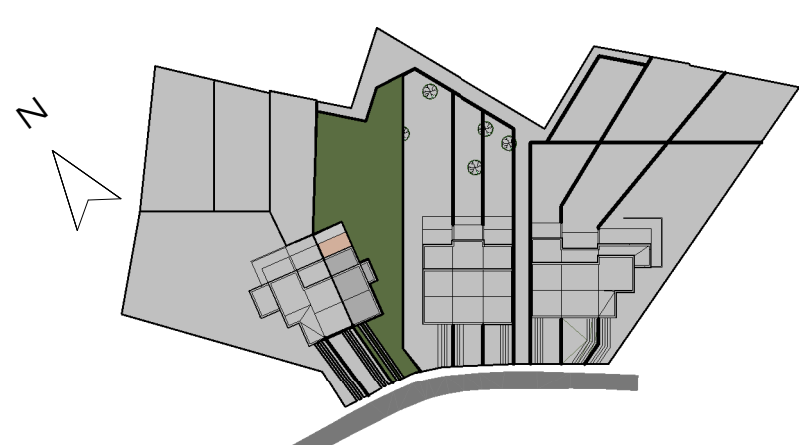
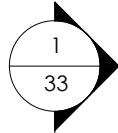


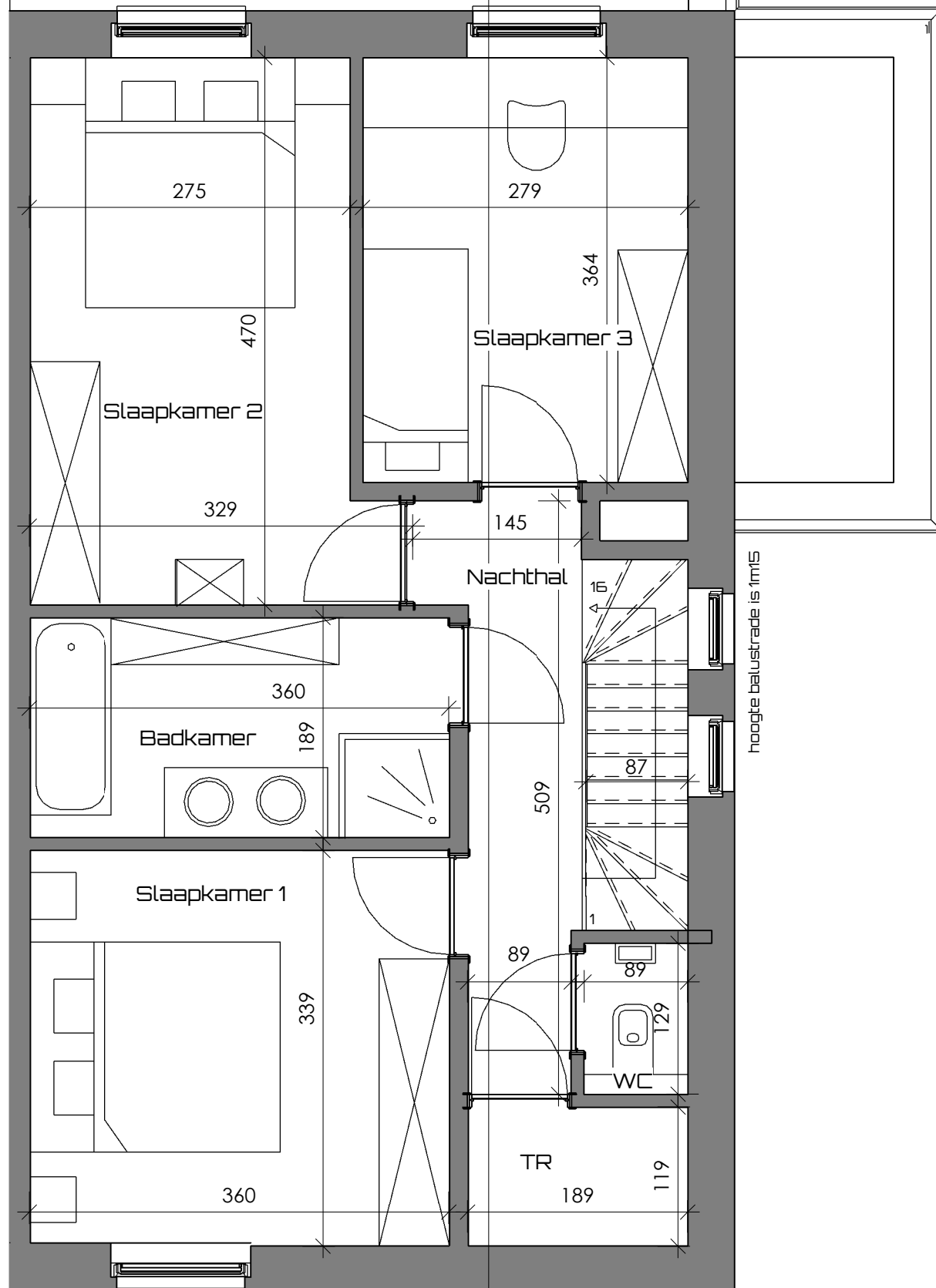
Woning 3
 Gelijkvloers
 Opp.: 75,59m²



Woning 3
 Opp. terrein:
 748m²

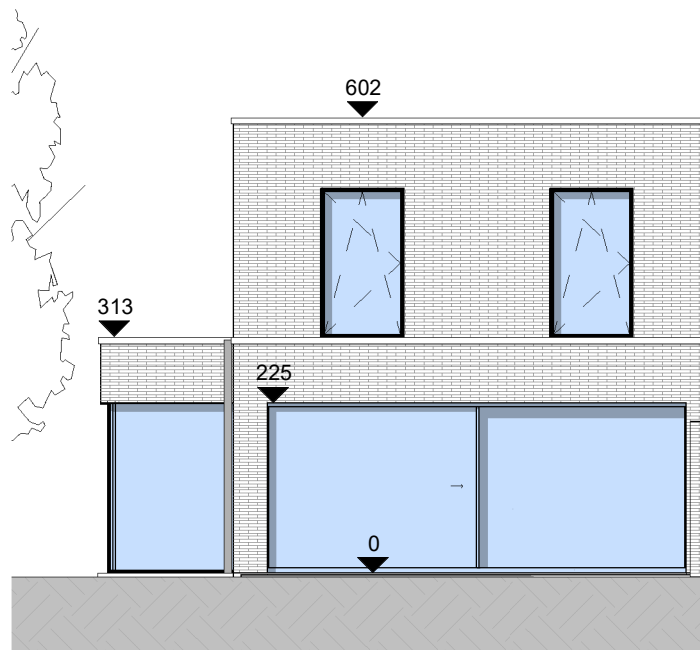


Woning 3
1ste verdieping
Opp.: 68,26m²

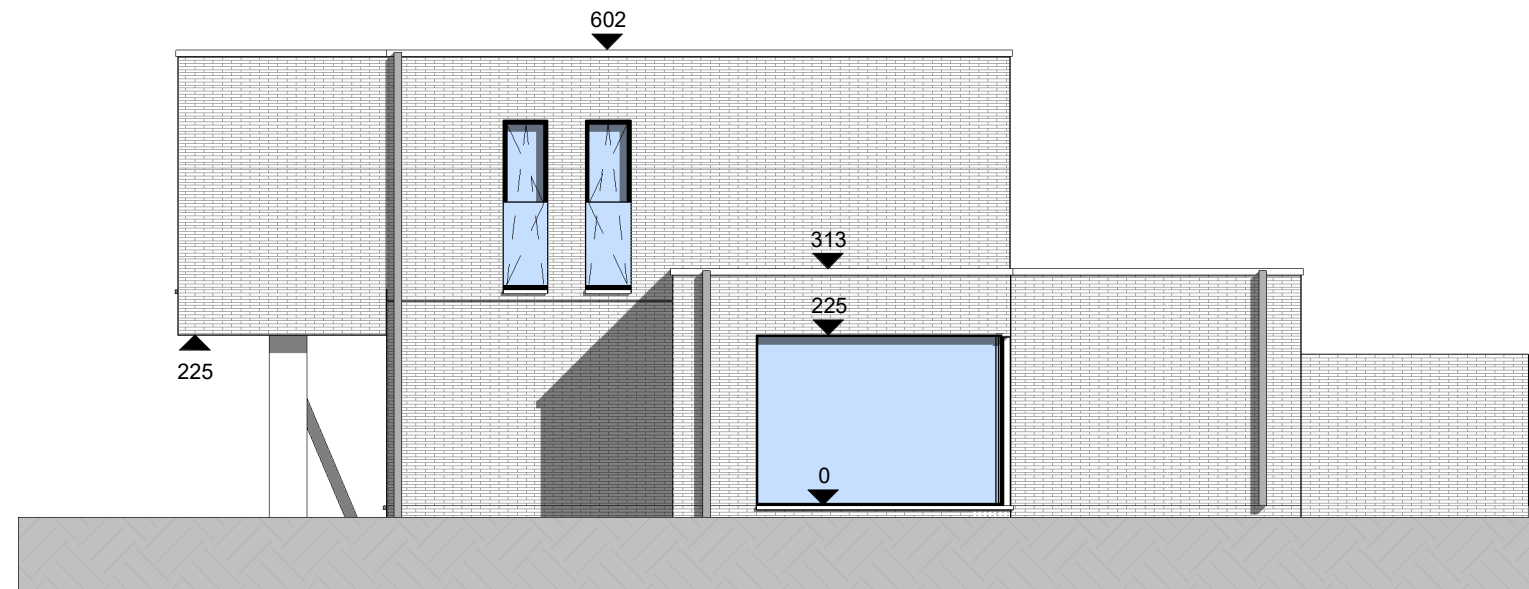
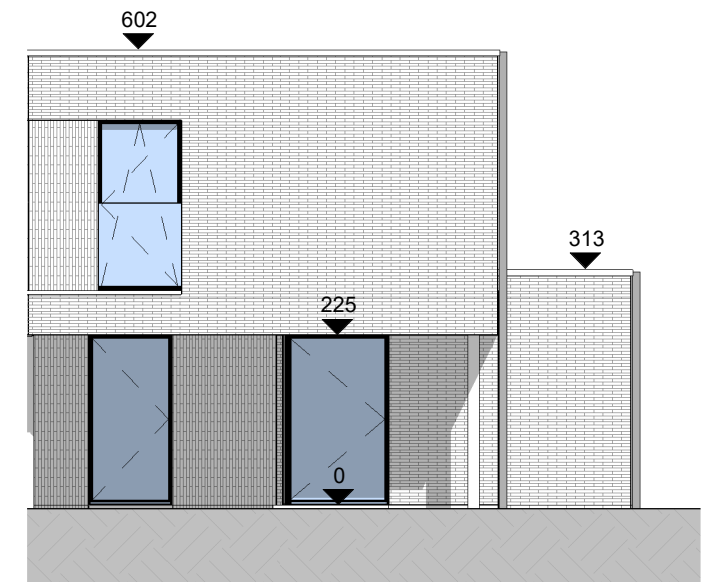


hoogte balustrade is 1m15

1 Achtergevel Woning 3
1 : 100



2 Voorgevel woning 3
1 : 100



3 Rechter zijgevel woning 3
1 : 100

