

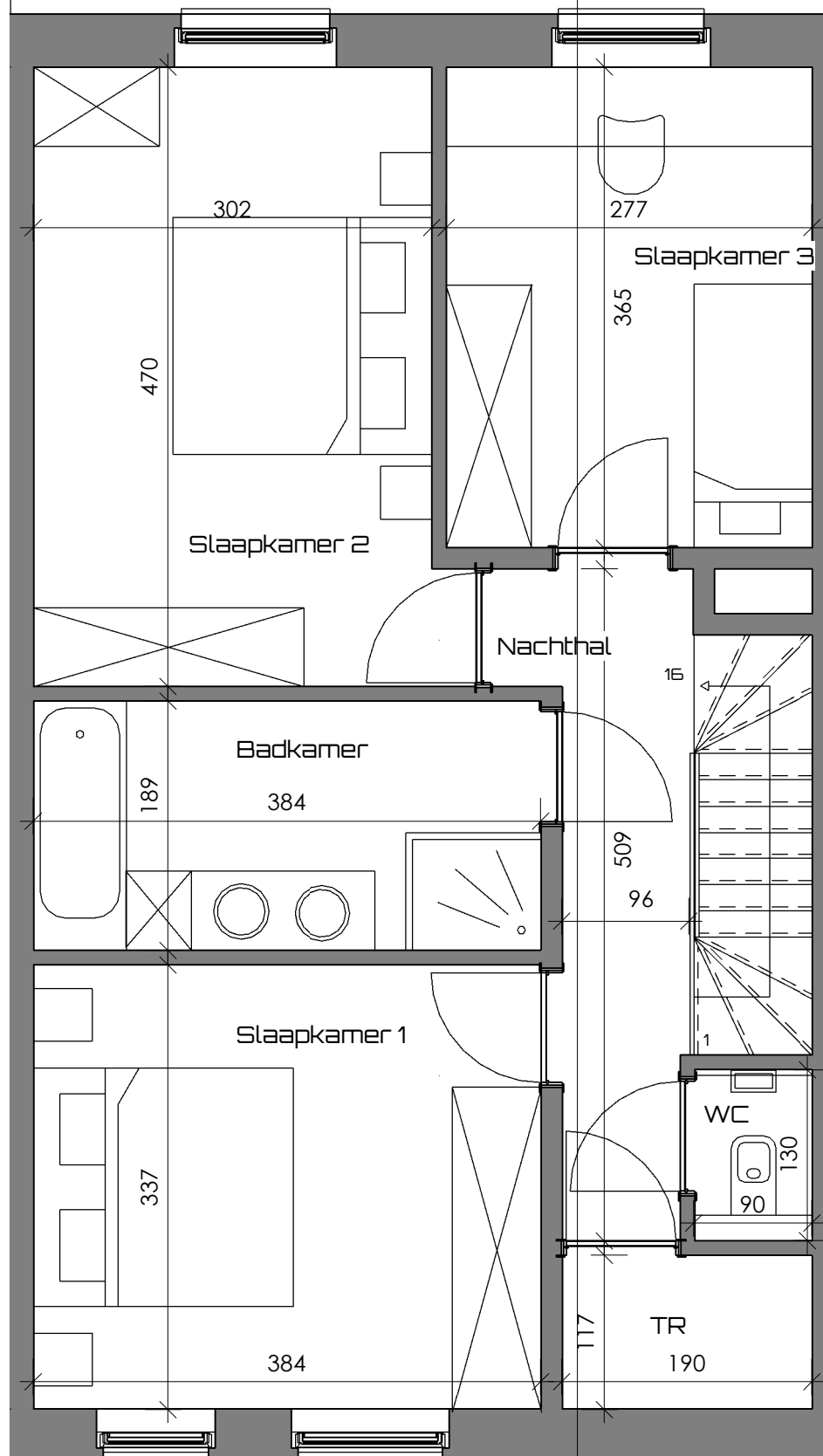
Woning 5
Opp. terrein:
319m²

Woning 5
Gelijkvloers
Opp.: 77,45m²

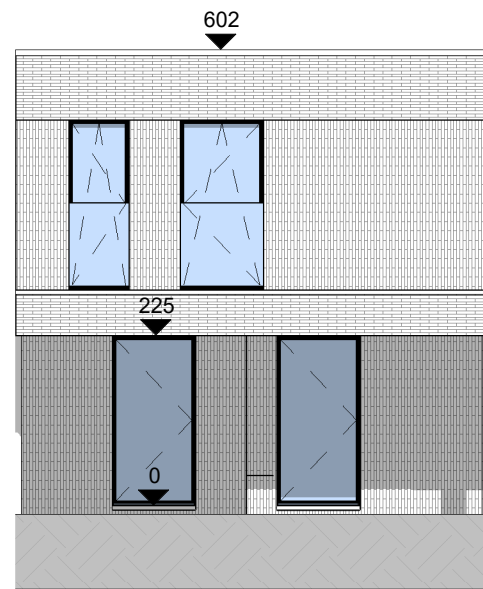
1
53

Woning 5

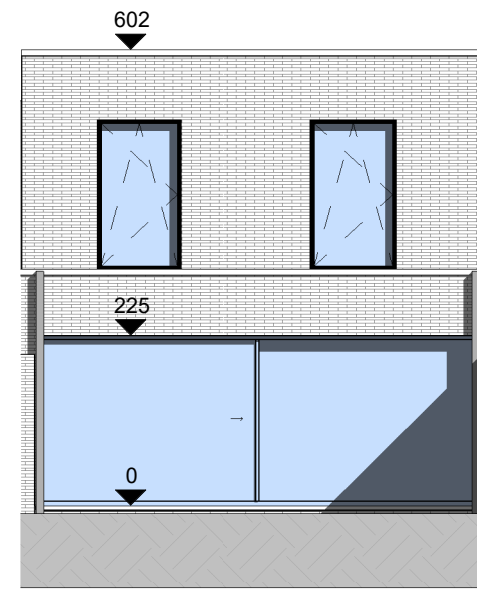
Eerste verdieping
Opp.: 68,60m²



hoogte balustrade is 1m15



① Voorgevel woning 5
1 : 100



② Achtergevel woning 5
1 : 100

