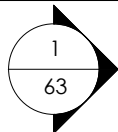
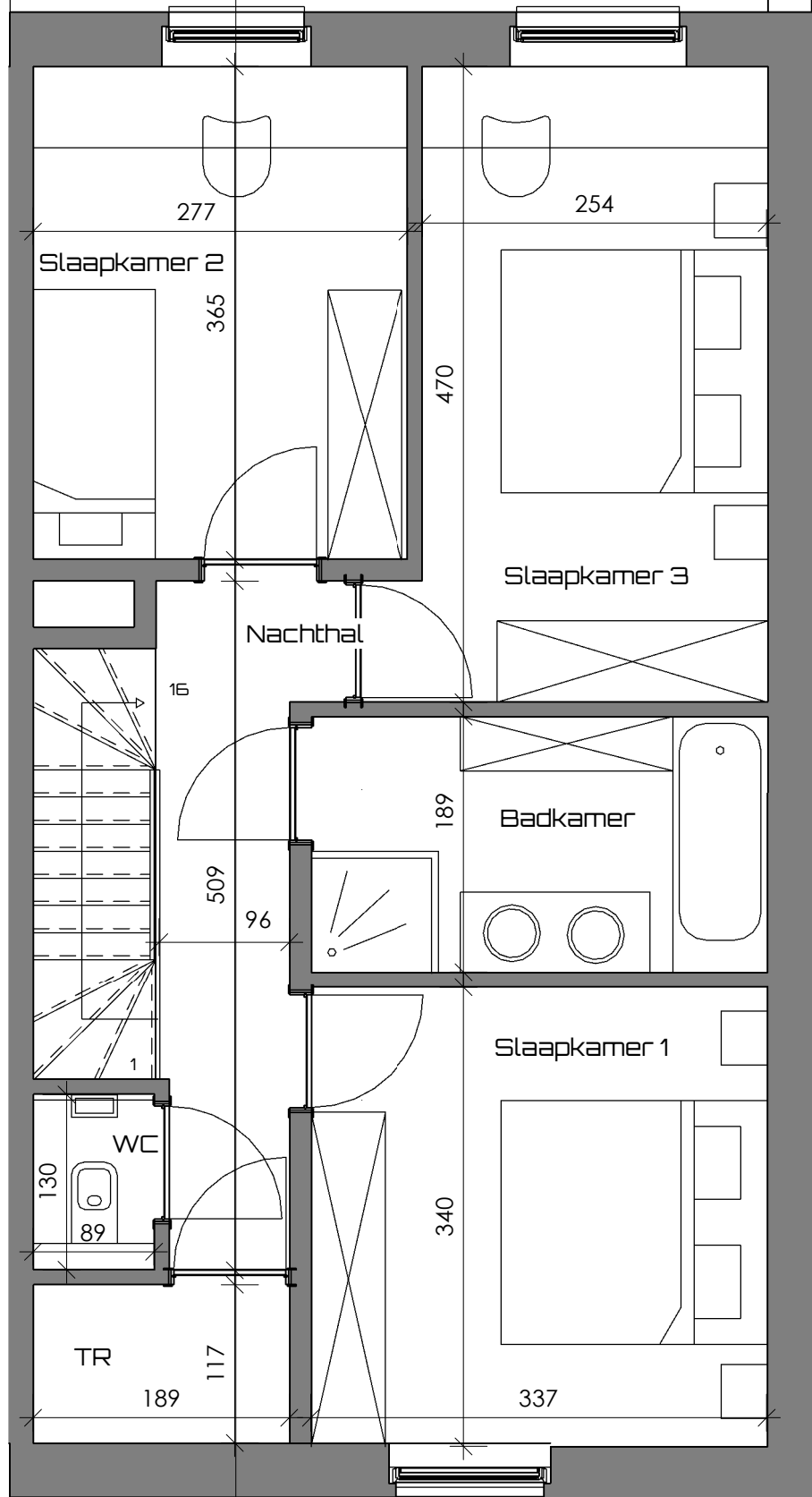


Woning 6  
Opp. terrein:  
295m<sup>2</sup>

Woning 6  
Gelijkvloers  
Opp.: 71,30m<sup>2</sup>

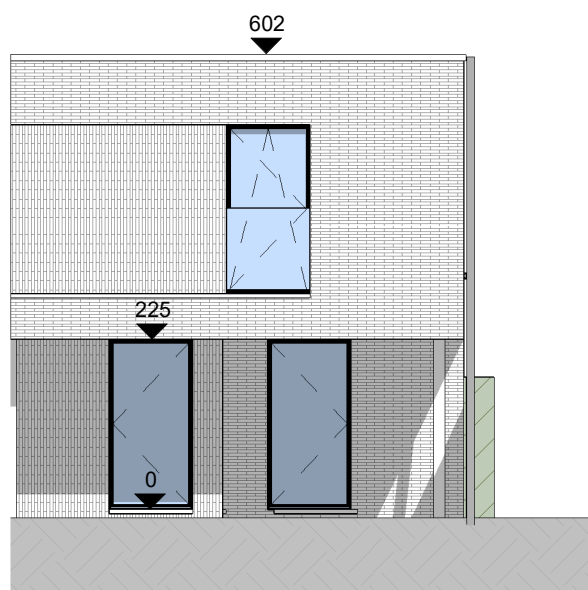


Woning 6  
Eerste verdieping  
Opp.: 66m<sup>2</sup>

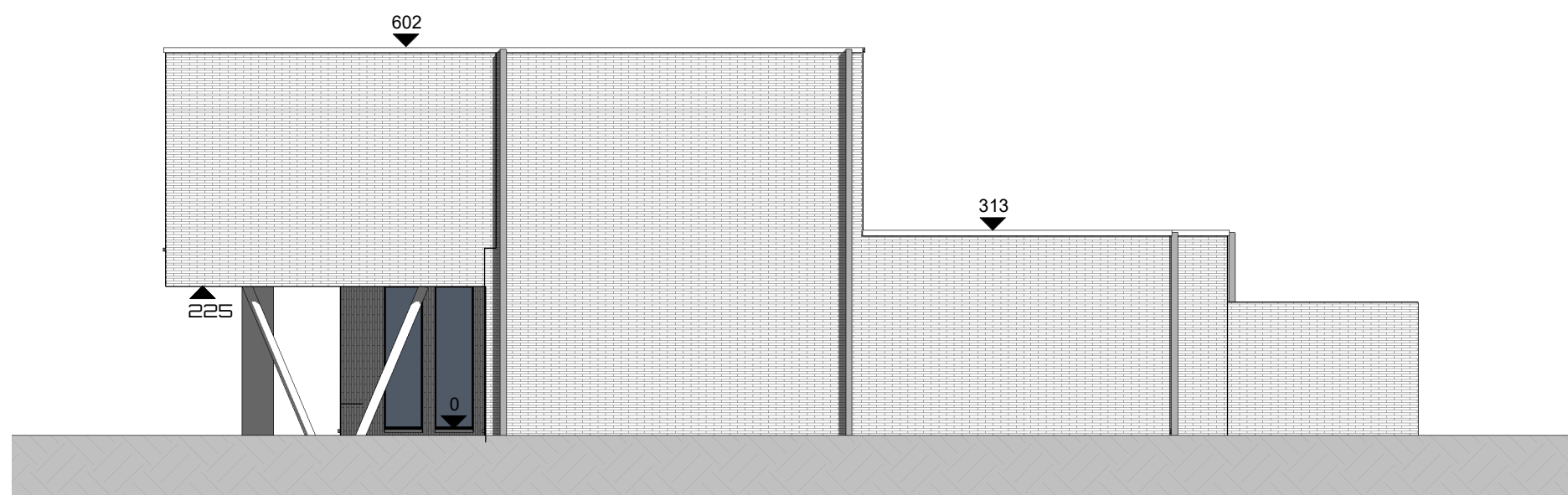
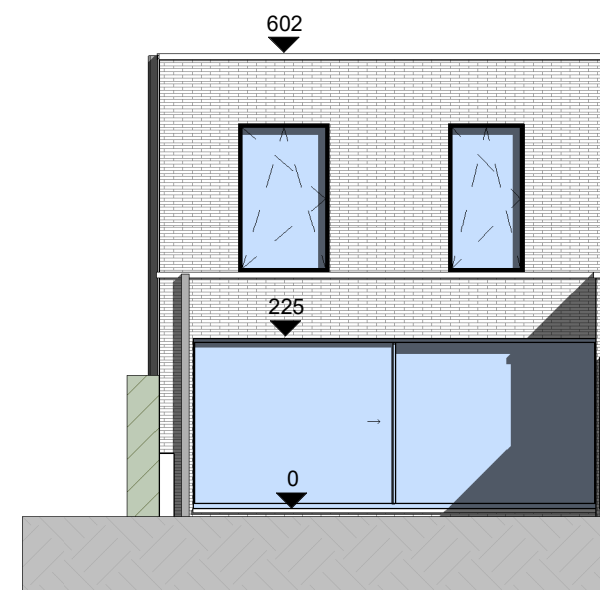


hoogte balustrade is 1m15

① Voorgevel woning 6  
1 : 100

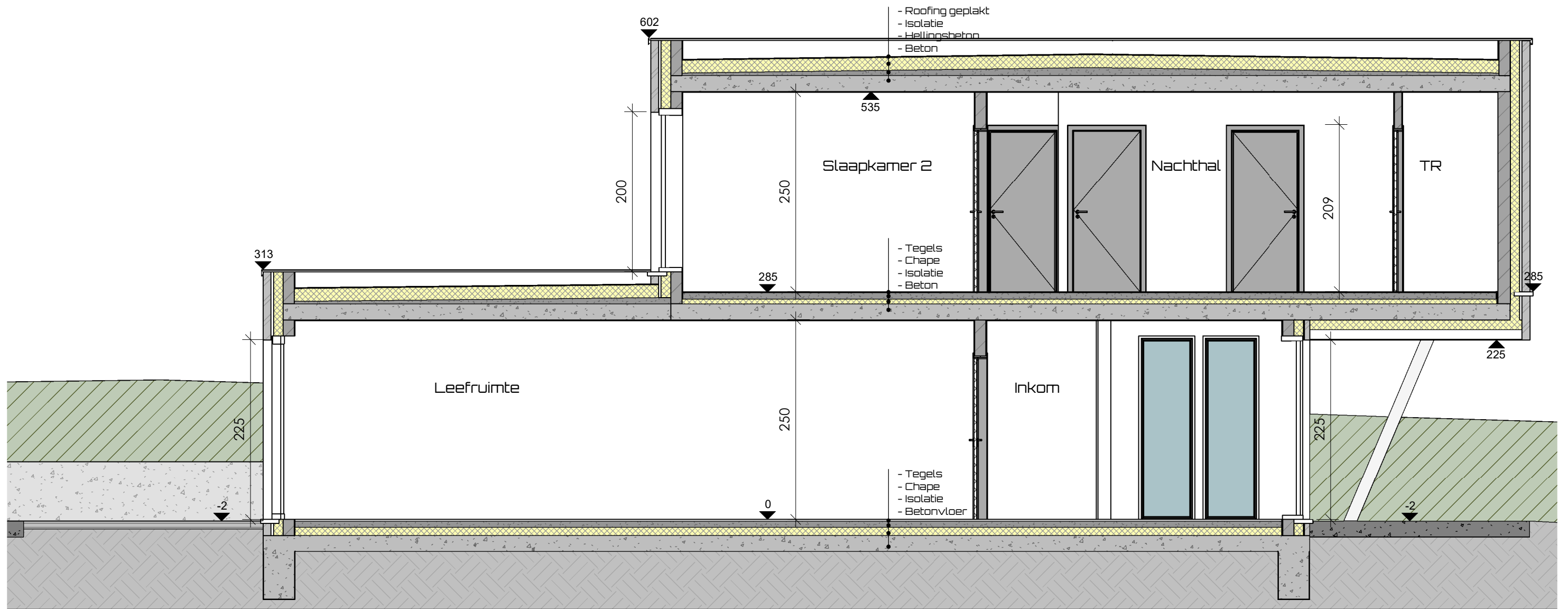


② Achtergevel woning 6  
1 : 100



③ Rechter zijgevel woning 6  
1 : 100





1 Doorsnede woning 6  
1 : 50